

Chord Type 0 1 3 11 in All Keys

Treble Clef, 4 Notes, Diamorphic Scale Degrees:1237

Stanley Jordan

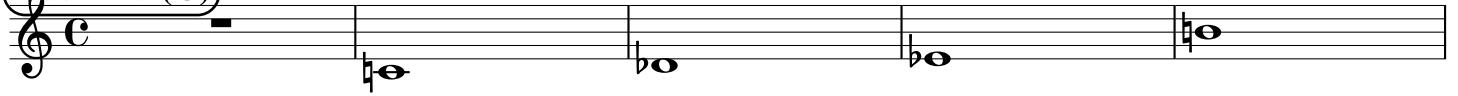
Root = 0 (C)

0:0

0:1

0:3

0:11



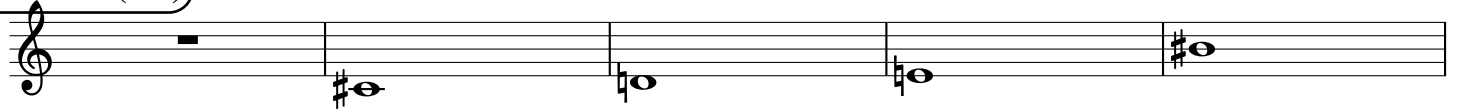
Root = 1 (C#)

1:0

1:1

1:3

1:11



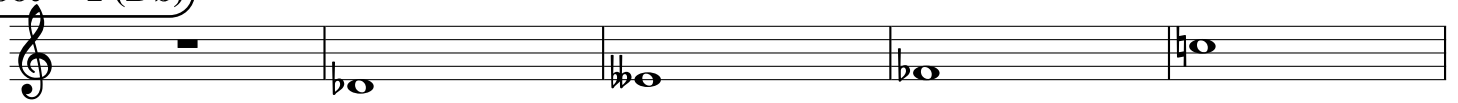
Root = 1 (Db)

1:0

1:1

1:3

1:11



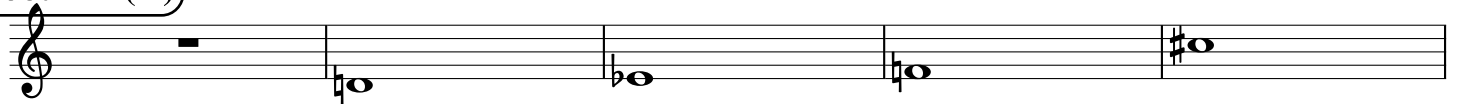
Root = 2 (D)

2:0

2:1

2:3

2:11



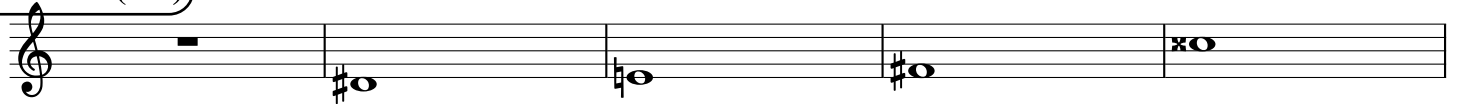
Root = 3 (D#)

3:0

3:1

3:3

3:11



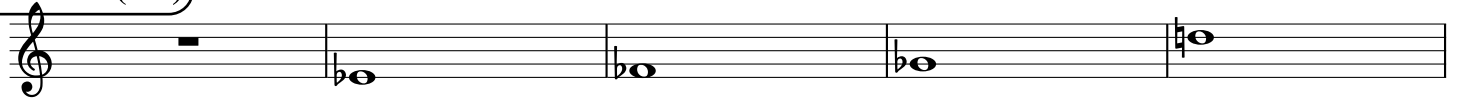
Root = 3 (Eb)

3:0

3:1

3:3

3:11



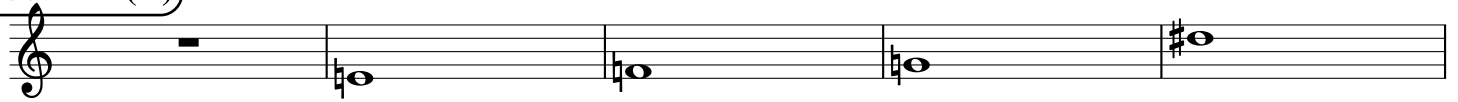
Root = 4 (E)

4:0

4:1

4:3

4:11



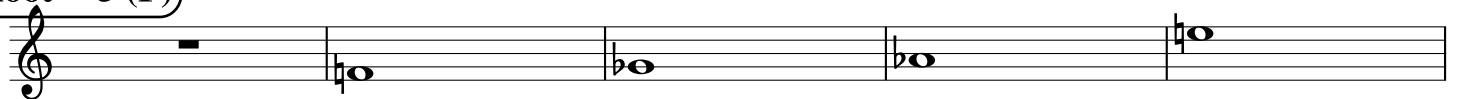
Root = 5 (F)

5:0

5:1

5:3

5:11



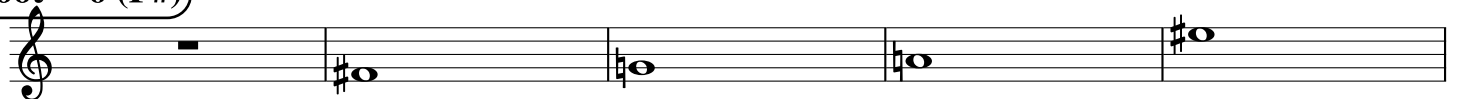
Root = 6 (F#)

6:0

6:1

6:3

6:11



Root = 6 (Gb)

6:0

6:1

6:3

6:11

A musical staff in treble clef showing four notes. The first note is a whole rest. The second note is Gb (flat), the third is G (natural), the fourth is Ab (flat), and the fifth is Gb (flat) with an 11th harmonic indicated by a small '11' above the note.

Root = 7 (G)

7:0

7:1

7:3

7:11

A musical staff in treble clef showing four notes. The first note is a whole rest. The second note is G (natural), the third is Gb (flat), the fourth is G (natural), and the fifth is G# (sharp) with an 11th harmonic indicated by a small '11' above the note.

Root = 8 (G#)

8:0

8:1

8:3

8:11

A musical staff in treble clef showing four notes. The first note is a whole rest. The second note is G# (sharp), the third is G (natural), the fourth is Gb (flat), and the fifth is G# (sharp) with an 11th harmonic indicated by a small '11' above the note.

Root = 8 (Ab)

8:0

8:1

8:3

8:11

A musical staff in treble clef showing four notes. The first note is a whole rest. The second note is Ab (flat), the third is Gb (flat), the fourth is G (natural), and the fifth is Ab (flat) with an 11th harmonic indicated by a small '11' above the note.

Root = 9 (A)

9:0

9:1

9:3

9:11

A musical staff in treble clef showing four notes. The first note is a whole rest. The second note is A (natural), the third is Ab (flat), the fourth is A (natural), and the fifth is A# (sharp) with an 11th harmonic indicated by a small '11' above the note.

Root = 10 (A#)

10:0

10:1

10:3

10:11

A musical staff in treble clef showing four notes. The first note is a whole rest. The second note is A# (sharp), the third is Ab (flat), the fourth is A (natural), and the fifth is A# (sharp) with an 11th harmonic indicated by a small '11' above the note.

Root = 10 (Bb)

10:0

10:1

10:3

10:11

A musical staff in treble clef showing four notes. The first note is a whole rest. The second note is Bb (flat), the third is B (natural), the fourth is Bb (flat), and the fifth is Bb (flat) with an 11th harmonic indicated by a small '11' above the note.

Root = 11 (B)

11:0

11:1

11:3

11:11

A musical staff in treble clef showing four notes. The first note is a whole rest. The second note is B (natural), the third is Bb (flat), the fourth is B (natural), and the fifth is B# (sharp) with an 11th harmonic indicated by a small '11' above the note.