

Chord Type 0 1 3 7 in All Keys

Treble Clef, 4 Notes, Diatonic Scale Degrees:1235

Stanley Jordan

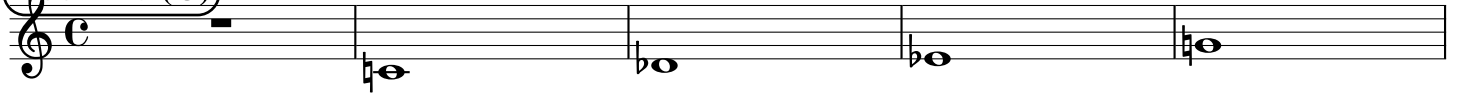
Root = 0 (C)

0:0

0:1

0:3

0:7



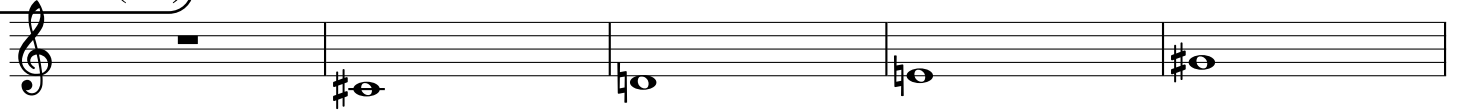
Root = 1 (C#)

1:0

1:1

1:3

1:7



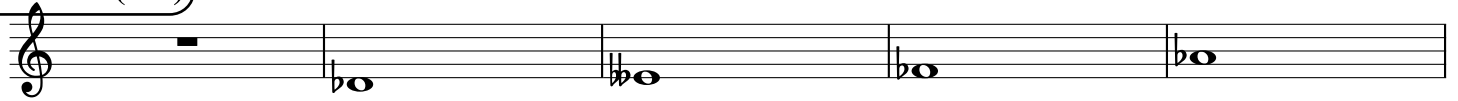
Root = 1 (Db)

1:0

1:1

1:3

1:7



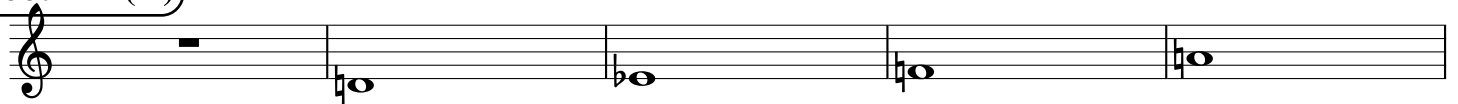
Root = 2 (D)

2:0

2:1

2:3

2:7



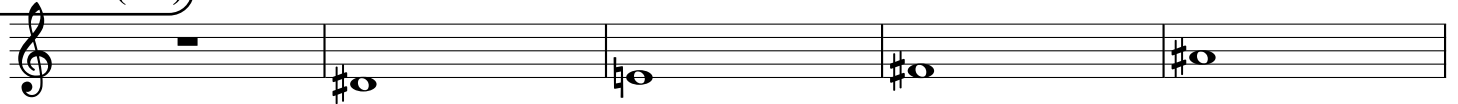
Root = 3 (D#)

3:0

3:1

3:3

3:7



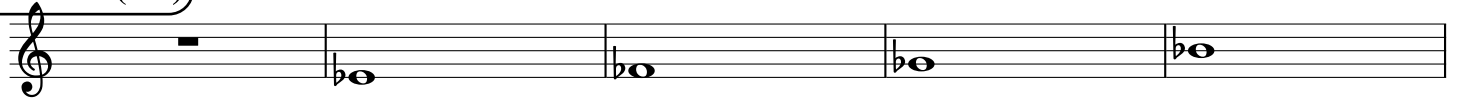
Root = 3 (Eb)

3:0

3:1

3:3

3:7



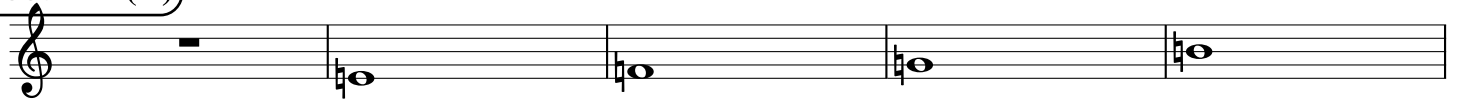
Root = 4 (E)

4:0

4:1

4:3

4:7



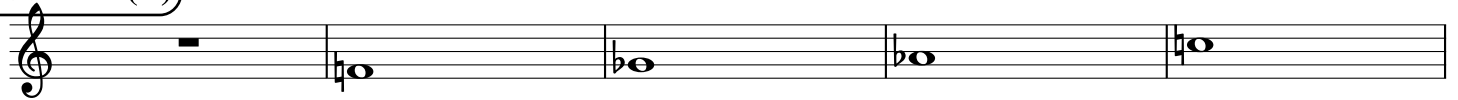
Root = 5 (F)

5:0

5:1

5:3

5:7



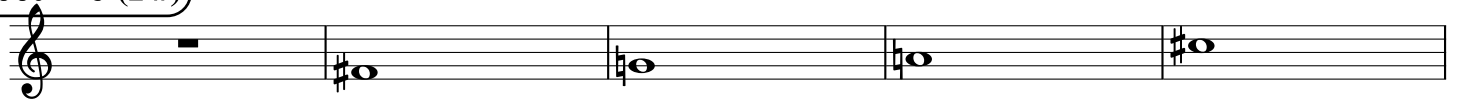
Root = 6 (F#)

6:0

6:1

6:3

6:7



Root = 6 (Gb)

6:0

6:1

6:3

6:7

A musical staff in treble clef showing four notes: a whole rest, a G-flat (F-sharp), an A-flat, and a B-flat. The notes are positioned on the second, third, and fourth lines of the staff.

Root = 7 (G)

7:0

7:1

7:3

7:7

A musical staff in treble clef showing four notes: a whole rest, a G, an A, and a B. The notes are positioned on the second, third, and fourth lines of the staff.

Root = 8 (G#)

8:0

8:1

8:3

8:7

A musical staff in treble clef showing four notes: a whole rest, a G-sharp, an A, and a B. The notes are positioned on the second, third, and fourth lines of the staff.

Root = 8 (Ab)

8:0

8:1

8:3

8:7

A musical staff in treble clef showing four notes: a whole rest, an A-flat, a B-flat, and a C. The notes are positioned on the second, third, and fourth lines of the staff.

Root = 9 (A)

9:0

9:1

9:3

9:7

A musical staff in treble clef showing four notes: a whole rest, an A, a B, and a C. The notes are positioned on the second, third, and fourth lines of the staff.

Root = 10 (A#)

10:0

10:1

10:3

10:7

A musical staff in treble clef showing four notes: a whole rest, an A-sharp, a B, and a C. The notes are positioned on the second, third, and fourth lines of the staff.

Root = 10 (Bb)

10:0

10:1

10:3

10:7

A musical staff in treble clef showing four notes: a whole rest, a B-flat, a C, and a D. The notes are positioned on the second, third, and fourth lines of the staff.

Root = 11 (B)

11:0

11:1

11:3

11:7

A musical staff in treble clef showing four notes: a whole rest, a B, a C, and a D. The notes are positioned on the second, third, and fourth lines of the staff.