

# Chord Type 0 1 2 4 in All Keys

Treble Clef, 4 Notes, Diamorphic Scale Degrees:1223

Stanley Jordan

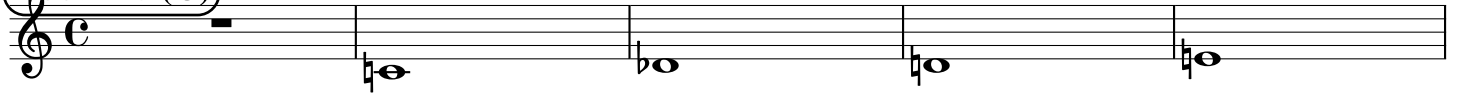
Root = 0 (C)

0:0

0:1

0:2

0:4



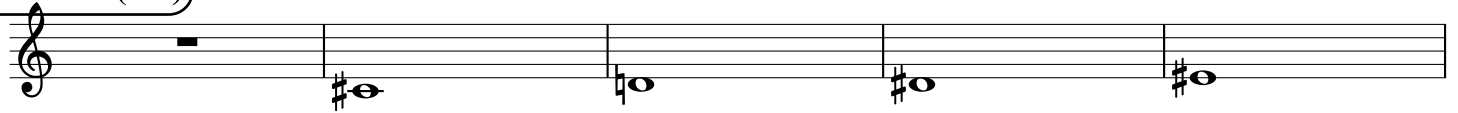
Root = 1 (C#)

1:0

1:1

1:2

1:4



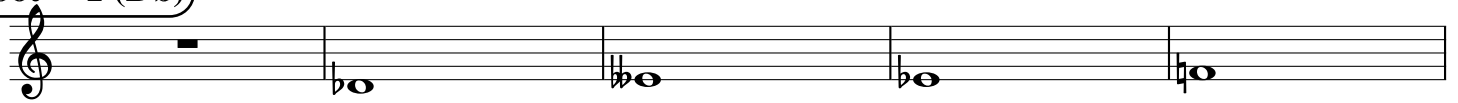
Root = 1 (Db)

1:0

1:1

1:2

1:4



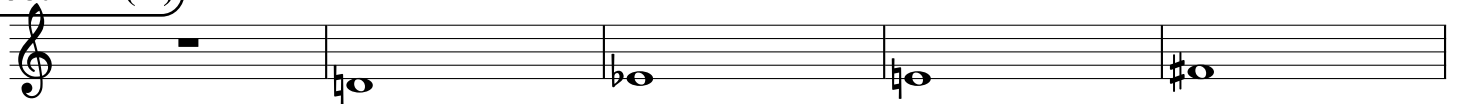
Root = 2 (D)

2:0

2:1

2:2

2:4



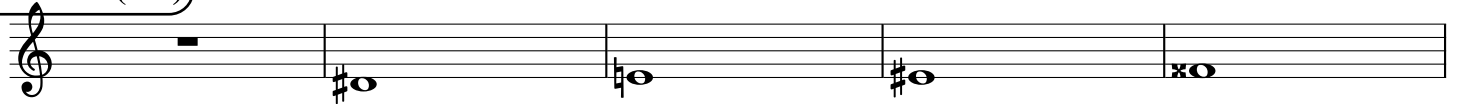
Root = 3 (D#)

3:0

3:1

3:2

3:4



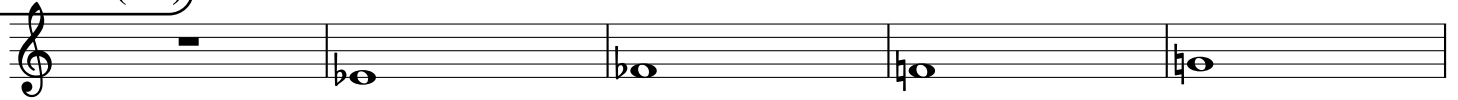
Root = 3 (Eb)

3:0

3:1

3:2

3:4



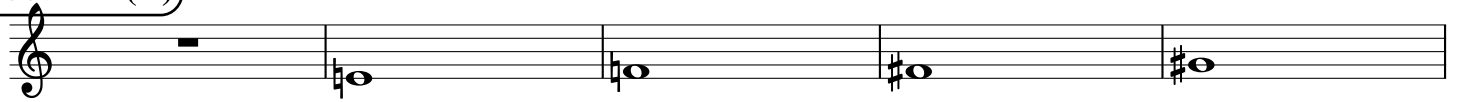
Root = 4 (E)

4:0

4:1

4:2

4:4



Root = 5 (F)

5:0

5:1

5:2

5:4



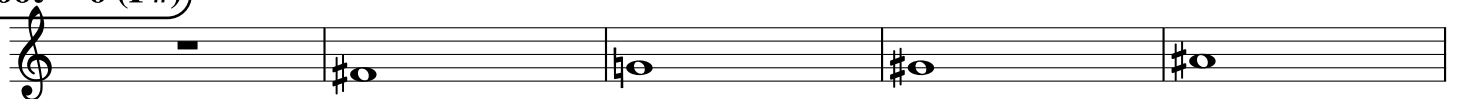
Root = 6 (F#)

6:0

6:1

6:2

6:4



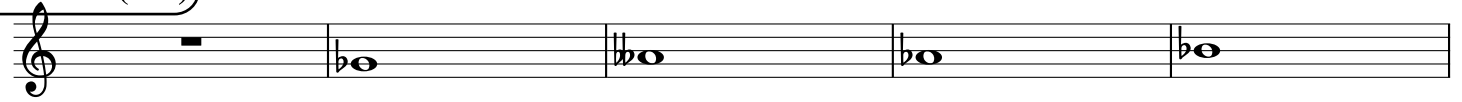
**Root = 6 (Gb)**

6:0

6:1

6:2

6:4



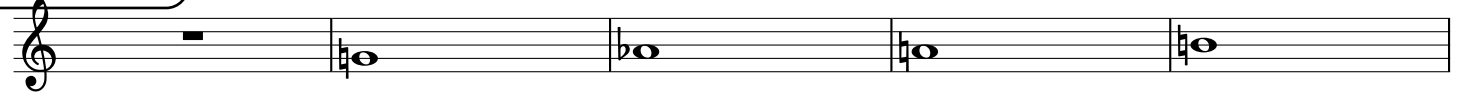
**Root = 7 (G)**

7:0

7:1

7:2

7:4



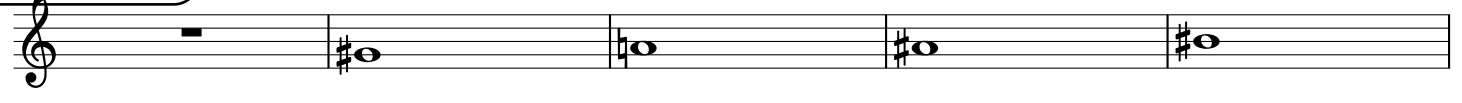
**Root = 8 (G#)**

8:0

8:1

8:2

8:4



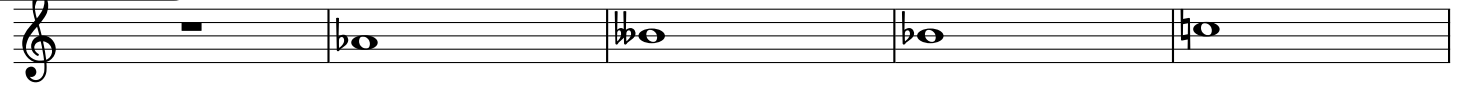
**Root = 8 (Ab)**

8:0

8:1

8:2

8:4



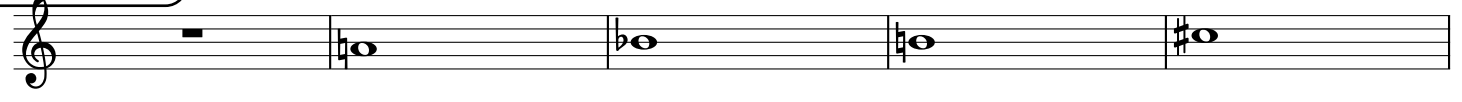
**Root = 9 (A)**

9:0

9:1

9:2

9:4



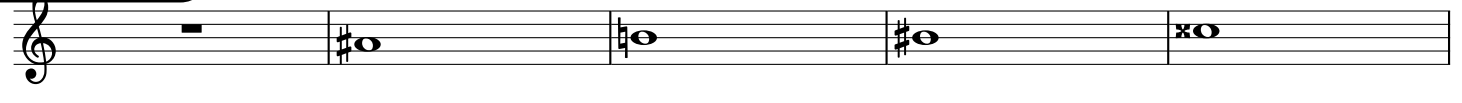
**Root = 10 (A#)**

10:0

10:1

10:2

10:4



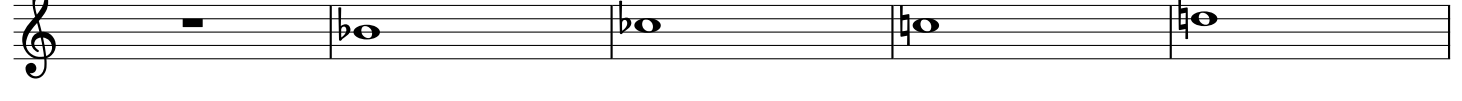
**Root = 10 (Bb)**

10:0

10:1

10:2

10:4



**Root = 11 (B)**

11:0

11:1

11:2

11:4

