

Chord Type 0 10 11 in All Keys

Treble Clef, 3 Notes, Diamorphic Scale Degrees:167

Stanley Jordan

Root = 0 (C)

0:0

0:10

0:11

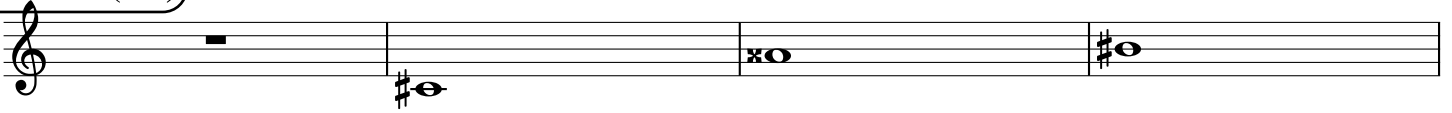


Root = 1 (C#)

1:0

1:10

1:11

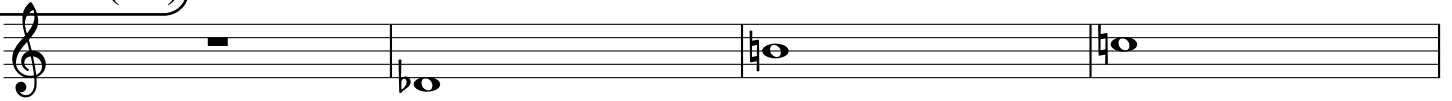


Root = 1 (Db)

1:0

1:10

1:11

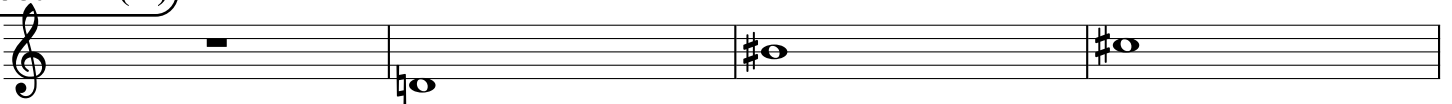


Root = 2 (D)

2:0

2:10

2:11

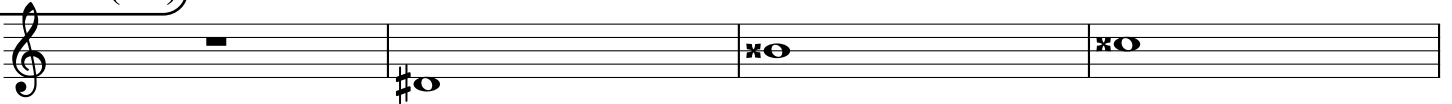


Root = 3 (D#)

3:0

3:10

3:11



Root = 3 (Eb)

3:0

3:10

3:11

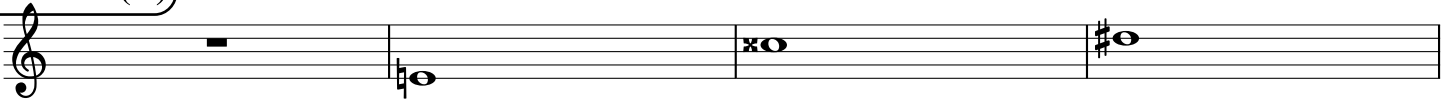


Root = 4 (E)

4:0

4:10

4:11



Root = 5 (F)

5:0

5:10

5:11

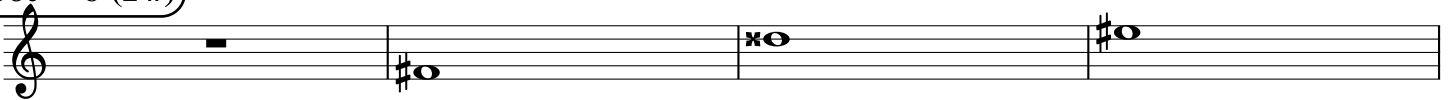


Root = 6 (F#)

6:0

6:10

6:11



Root = 6 (Gb)

6:0 6:10 6:11

A musical staff in treble clef showing three measures. The first measure contains a whole rest. The second measure contains a whole note Gb (F#) with a flat sign. The third measure contains a whole note Gb (F#) with a flat sign. Above the staff, the labels 6:0, 6:10, and 6:11 are positioned above their respective measures.

Root = 7 (G)

7:0 7:10 7:11

A musical staff in treble clef showing three measures. The first measure contains a whole rest. The second measure contains a whole note G with a sharp sign. The third measure contains a whole note G with a sharp sign. Above the staff, the labels 7:0, 7:10, and 7:11 are positioned above their respective measures.

Root = 8 (G#)

8:0 8:10 8:11

A musical staff in treble clef showing three measures. The first measure contains a whole rest. The second measure contains a whole note G# with a sharp sign. The third measure contains a whole note G# with a sharp sign. Above the staff, the labels 8:0, 8:10, and 8:11 are positioned above their respective measures.

Root = 8 (Ab)

8:0 8:10 8:11

A musical staff in treble clef showing three measures. The first measure contains a whole rest. The second measure contains a whole note Ab (F) with a flat sign. The third measure contains a whole note Ab (F) with a flat sign. Above the staff, the labels 8:0, 8:10, and 8:11 are positioned above their respective measures.

Root = 9 (A)

9:0 9:10 9:11

A musical staff in treble clef showing three measures. The first measure contains a whole rest. The second measure contains a whole note A with a sharp sign. The third measure contains a whole note A with a sharp sign. Above the staff, the labels 9:0, 9:10, and 9:11 are positioned above their respective measures.

Root = 10 (A#)

10:0 10:10 10:11

A musical staff in treble clef showing three measures. The first measure contains a whole rest. The second measure contains a whole note A# with a sharp sign. The third measure contains a whole note A# with a sharp sign. Above the staff, the labels 10:0, 10:10, and 10:11 are positioned above their respective measures.

Root = 10 (Bb)

10:0 10:10 10:11

A musical staff in treble clef showing three measures. The first measure contains a whole rest. The second measure contains a whole note Bb (B) with a flat sign. The third measure contains a whole note Bb (B) with a flat sign. Above the staff, the labels 10:0, 10:10, and 10:11 are positioned above their respective measures.

Root = 11 (B)

11:0 11:10 11:11

A musical staff in treble clef showing three measures. The first measure contains a whole rest. The second measure contains a whole note B with a sharp sign. The third measure contains a whole note B with a sharp sign. Above the staff, the labels 11:0, 11:10, and 11:11 are positioned above their respective measures.

69

An empty musical staff in treble clef.