

Chord Type 0 7 11 in All Keys

Treble Clef, 3 Notes, Diatonic Scale Degrees:157

Stanley Jordan

Root = 0 (C)

0:0

0:7

0:11



Root = 1 (C#)

1:0

1:7

1:11

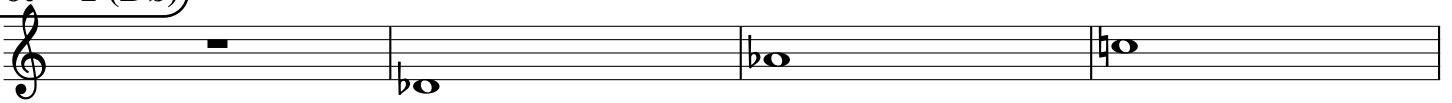


Root = 1 (Db)

1:0

1:7

1:11



Root = 2 (D)

2:0

2:7

2:11



Root = 3 (D#)

3:0

3:7

3:11



Root = 3 (Eb)

3:0

3:7

3:11

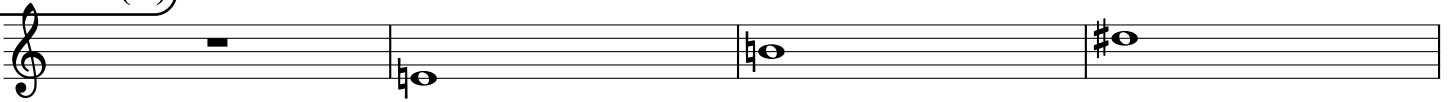


Root = 4 (E)

4:0

4:7

4:11



Root = 5 (F)

5:0

5:7

5:11



Root = 6 (F#)

6:0

6:7

6:11



Root = 6 (Gb)

6:0 6:7 6:11

A musical staff in treble clef showing three notes. The first note is a whole rest. The second note is a half note Gb (first line, flat). The third note is a half note Gb (first line, flat) with a sharp sign above it, indicating a natural G.

Root = 7 (G)

7:0 7:7 7:11

A musical staff in treble clef showing three notes. The first note is a whole rest. The second note is a half note G (second line). The third note is a half note G (second line) with a sharp sign above it, indicating a natural G.

Root = 8 (G#)

8:0 8:7 8:11

A musical staff in treble clef showing three notes. The first note is a whole rest. The second note is a half note G# (second line, sharp). The third note is a half note G# (second line, sharp) with a sharp sign above it, indicating a natural G.

Root = 8 (Ab)

8:0 8:7 8:11

A musical staff in treble clef showing three notes. The first note is a whole rest. The second note is a half note Ab (second line, flat). The third note is a half note Ab (second line, flat) with a sharp sign above it, indicating a natural G.

Root = 9 (A)

9:0 9:7 9:11

A musical staff in treble clef showing three notes. The first note is a whole rest. The second note is a half note A (second space). The third note is a half note A (second space) with a sharp sign above it, indicating a natural A.

Root = 10 (A#)

10:0 10:7 10:11

A musical staff in treble clef showing three notes. The first note is a whole rest. The second note is a half note A# (second space, sharp). The third note is a half note A# (second space, sharp) with a sharp sign above it, indicating a natural A.

Root = 10 (Bb)

10:0 10:7 10:11

A musical staff in treble clef showing three notes. The first note is a whole rest. The second note is a half note Bb (second space, flat). The third note is a half note Bb (second space, flat) with a sharp sign above it, indicating a natural B.

Root = 11 (B)

11:0 11:7 11:11

A musical staff in treble clef showing three notes. The first note is a whole rest. The second note is a half note B (third line). The third note is a half note B (third line) with a sharp sign above it, indicating a natural B.

69

An empty musical staff in treble clef with the number 69 written above it.