

Chord Type 0 4 11 in All Keys

Treble Clef, 3 Notes, Diatonic Scale Degrees:137

Stanley Jordan

Root = 0 (C)

0:0

0:4

0:11



Root = 1 (C#)

1:0

1:4

1:11



Root = 1 (Db)

1:0

1:4

1:11



Root = 2 (D)

2:0

2:4

2:11



Root = 3 (D#)

3:0

3:4

3:11



Root = 3 (Eb)

3:0

3:4

3:11

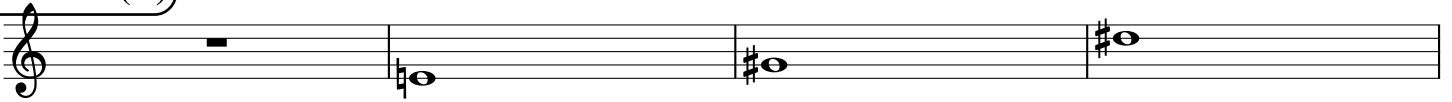


Root = 4 (E)

4:0

4:4

4:11



Root = 5 (F)

5:0

5:4

5:11



Root = 6 (F#)

6:0

6:4

6:11



Root = 6 (Gb)

6:0 6:4 6:11

A musical staff in treble clef with a key signature of one flat. The first measure contains a whole rest. The second measure contains a whole note Gb (F#4). The third measure contains a whole note Gb (F#4). The fourth measure contains a whole note Gb (F#4) with a sharp sign above it.

Root = 7 (G)

7:0 7:4 7:11

A musical staff in treble clef with a key signature of one sharp. The first measure contains a whole rest. The second measure contains a whole note G (F#4). The third measure contains a whole note G (F#4). The fourth measure contains a whole note G (F#4) with a sharp sign above it.

Root = 8 (G#)

8:0 8:4 8:11

A musical staff in treble clef with a key signature of two sharps. The first measure contains a whole rest. The second measure contains a whole note G# (F#4). The third measure contains a whole note G# (F#4). The fourth measure contains a whole note G# (F#4) with a sharp sign above it.

Root = 8 (Ab)

8:0 8:4 8:11

A musical staff in treble clef with a key signature of one flat. The first measure contains a whole rest. The second measure contains a whole note Ab (F#4). The third measure contains a whole note Ab (F#4). The fourth measure contains a whole note Ab (F#4) with a sharp sign above it.

Root = 9 (A)

9:0 9:4 9:11

A musical staff in treble clef with a key signature of two sharps. The first measure contains a whole rest. The second measure contains a whole note A (F#4). The third measure contains a whole note A (F#4). The fourth measure contains a whole note A (F#4) with a sharp sign above it.

Root = 10 (A#)

10:0 10:4 10:11

A musical staff in treble clef with a key signature of three sharps. The first measure contains a whole rest. The second measure contains a whole note A# (F#4). The third measure contains a whole note A# (F#4). The fourth measure contains a whole note A# (F#4) with a sharp sign above it.

Root = 10 (Bb)

10:0 10:4 10:11

A musical staff in treble clef with a key signature of two flats. The first measure contains a whole rest. The second measure contains a whole note Bb (F#4). The third measure contains a whole note Bb (F#4). The fourth measure contains a whole note Bb (F#4) with a sharp sign above it.

Root = 11 (B)

11:0 11:4 11:11

A musical staff in treble clef with a key signature of three sharps. The first measure contains a whole rest. The second measure contains a whole note B (F#4). The third measure contains a whole note B (F#4). The fourth measure contains a whole note B (F#4) with a sharp sign above it.

69

An empty musical staff in treble clef.