

# Chord Type 0 9 in All Keys

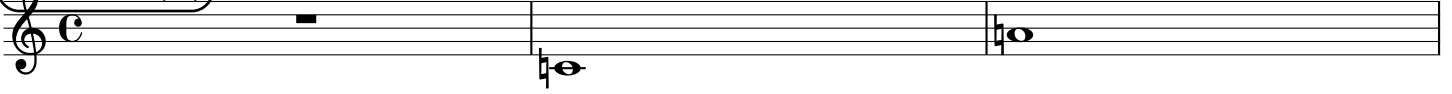
Treble Clef, 2 Notes, Diamorphic Scale Degrees:16

Stanley Jordan

Root = 0 (C)

0:0

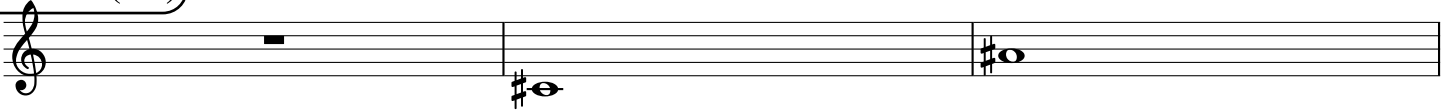
0:9



Root = 1 (C#)

1:0

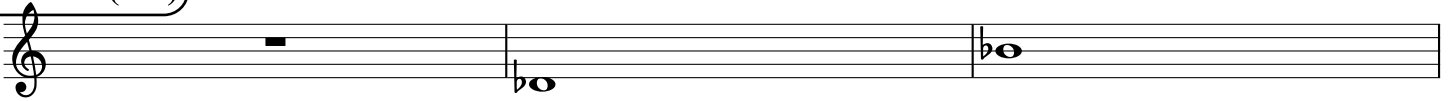
1:9



Root = 1 (Db)

1:0

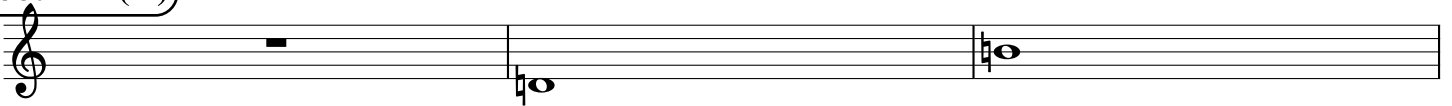
1:9



Root = 2 (D)

2:0

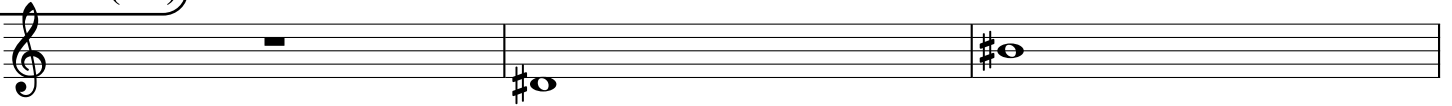
2:9



Root = 3 (D#)

3:0

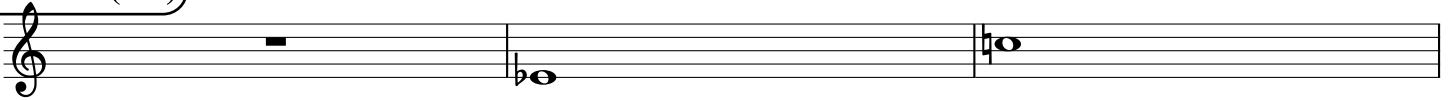
3:9



Root = 3 (Eb)

3:0

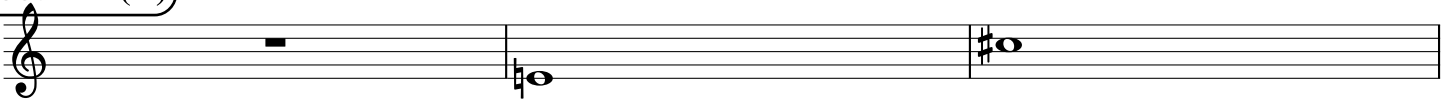
3:9



Root = 4 (E)

4:0

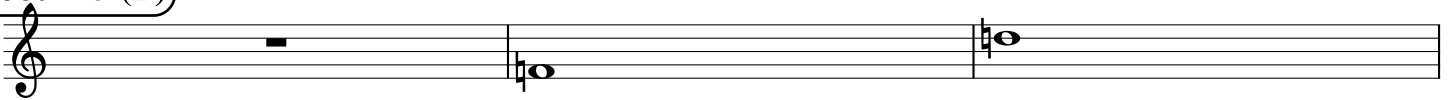
4:9



Root = 5 (F)

5:0

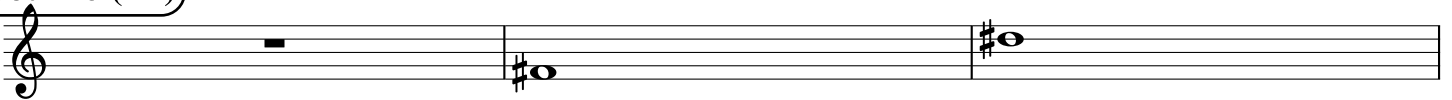
5:9



Root = 6 (F#)

6:0

6:9



Root = 6 (Gb)

6:0 6:9

Root = 7 (G)

7:0 7:9

Root = 8 (G#)

8:0 8:9

Root = 8 (Ab)

8:0 8:9

Root = 9 (A)

9:0 9:9

Root = 10 (A#)

10:0 10:9

Root = 10 (Bb)

10:0 10:9

Root = 11 (B)

11:0 11:9

52