

Chord Type 0 8 in All Keys

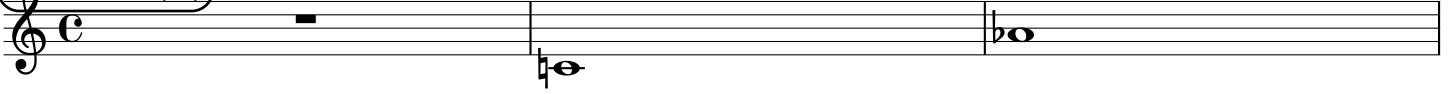
Treble Clef, 2 Notes, Diamorphic Scale Degrees:16

Stanley Jordan

Root = 0 (C)

0:0

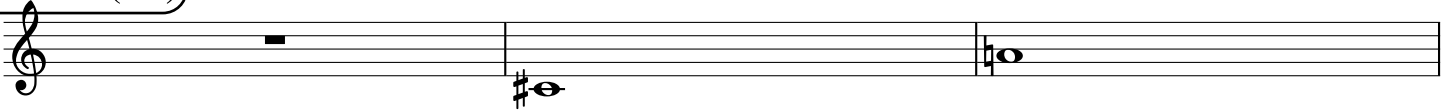
0:8



Root = 1 (C#)

1:0

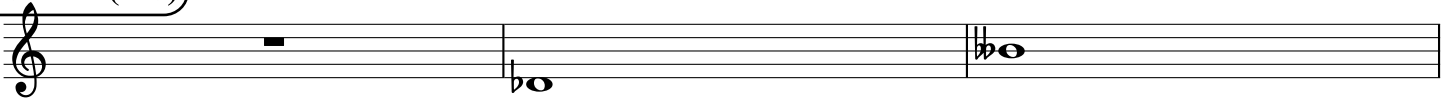
1:8



Root = 1 (Db)

1:0

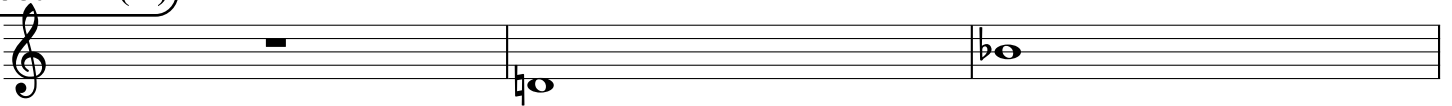
1:8



Root = 2 (D)

2:0

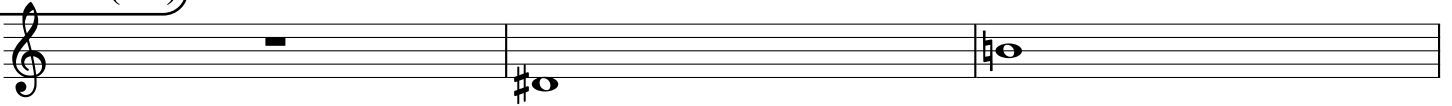
2:8



Root = 3 (D#)

3:0

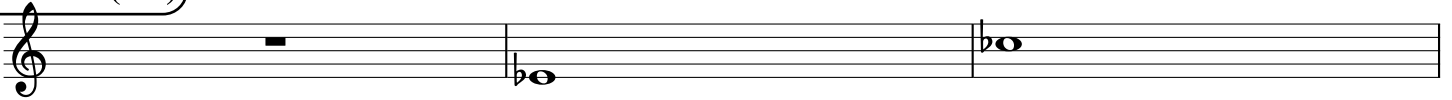
3:8



Root = 3 (Eb)

3:0

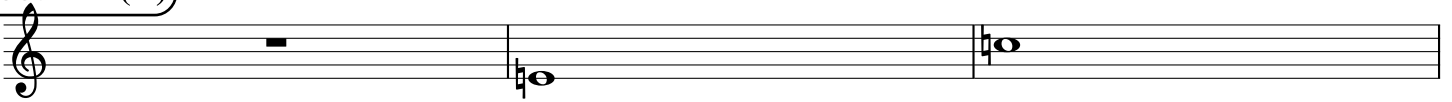
3:8



Root = 4 (E)

4:0

4:8



Root = 5 (F)

5:0

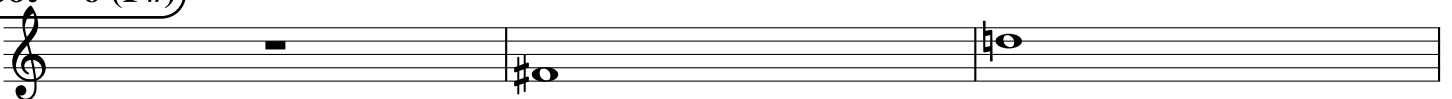
5:8



Root = 6 (F#)

6:0

6:8



Root = 6 (Gb)

6:0 6:8

A musical staff in treble clef showing a whole rest, followed by a half note Gb (labeled 6:0), and a half note Gb (labeled 6:8).

Root = 7 (G)

7:0 7:8

A musical staff in treble clef showing a whole rest, followed by a half note G (labeled 7:0), and a half note G (labeled 7:8).

Root = 8 (G#)

8:0 8:8

A musical staff in treble clef showing a whole rest, followed by a half note G# (labeled 8:0), and a half note G# (labeled 8:8).

Root = 8 (Ab)

8:0 8:8

A musical staff in treble clef showing a whole rest, followed by a half note Ab (labeled 8:0), and a half note Ab (labeled 8:8).

Root = 9 (A)

9:0 9:8

A musical staff in treble clef showing a whole rest, followed by a half note A (labeled 9:0), and a half note A (labeled 9:8).

Root = 10 (A#)

10:0 10:8

A musical staff in treble clef showing a whole rest, followed by a half note A# (labeled 10:0), and a half note A# (labeled 10:8).

Root = 10 (Bb)

10:0 10:8

A musical staff in treble clef showing a whole rest, followed by a half note Bb (labeled 10:0), and a half note Bb (labeled 10:8).

Root = 11 (B)

11:0 11:8

A musical staff in treble clef showing a whole rest, followed by a half note B (labeled 11:0), and a half note B (labeled 11:8).

52

An empty musical staff in treble clef.