

Chord Type 0 7 in All Keys

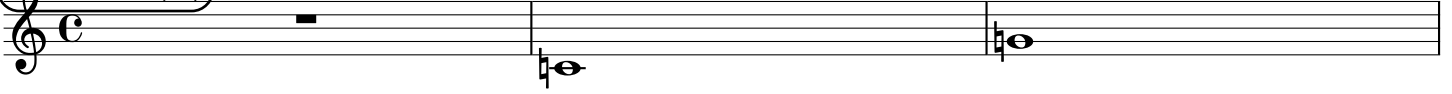
Treble Clef, 2 Notes, Diamorphic Scale Degrees:15

Stanley Jordan

Root = 0 (C)

0:0

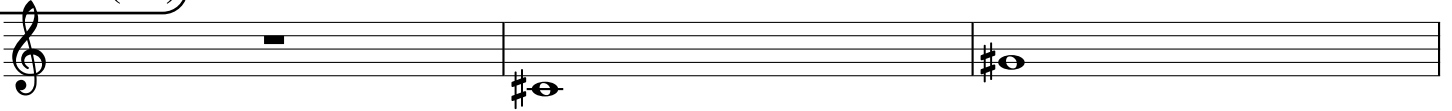
0:7



Root = 1 (C#)

1:0

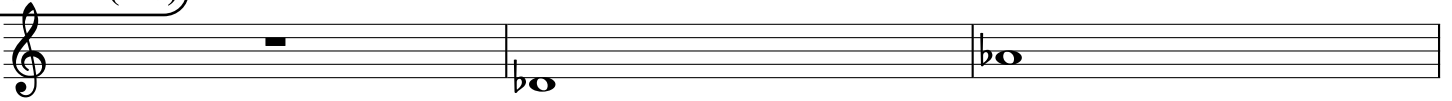
1:7



Root = 1 (Db)

1:0

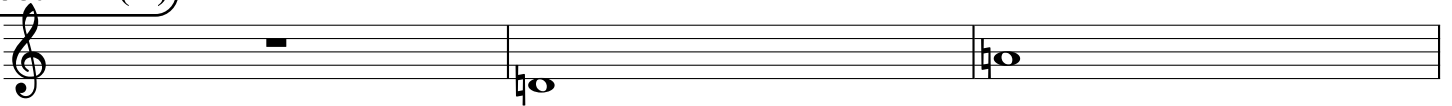
1:7



Root = 2 (D)

2:0

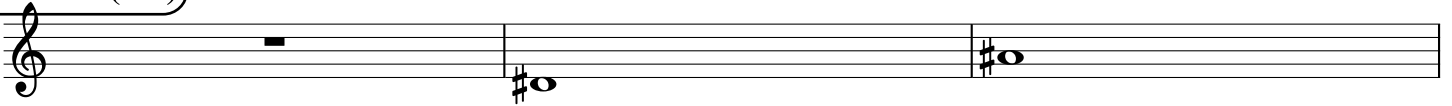
2:7



Root = 3 (D#)

3:0

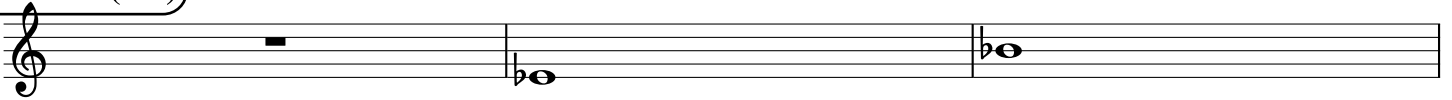
3:7



Root = 3 (Eb)

3:0

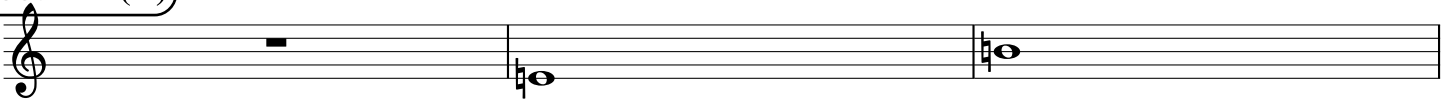
3:7



Root = 4 (E)

4:0

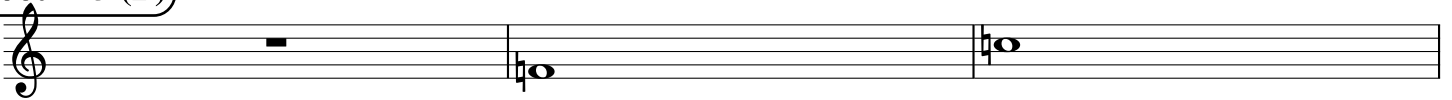
4:7



Root = 5 (F)

5:0

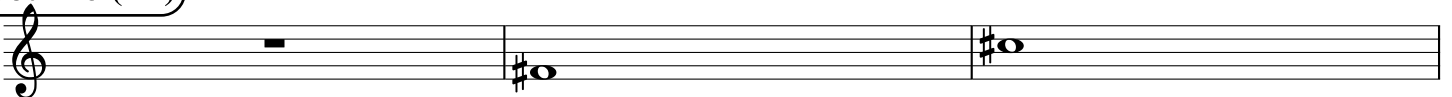
5:7



Root = 6 (F#)

6:0

6:7



Root = 6 (Gb)

6:0

6:7

A musical staff in treble clef showing a whole rest on the first line, followed by a whole note Gb on the second line, and a whole note Gb on the second line.

Root = 7 (G)

7:0

7:7

A musical staff in treble clef showing a whole rest on the first line, followed by a whole note G on the second line, and a whole note G on the second line.

Root = 8 (G#)

8:0

8:7

A musical staff in treble clef showing a whole rest on the first line, followed by a whole note G# on the second line, and a whole note G# on the second line.

Root = 8 (Ab)

8:0

8:7

A musical staff in treble clef showing a whole rest on the first line, followed by a whole note Ab on the second line, and a whole note Ab on the second line.

Root = 9 (A)

9:0

9:7

A musical staff in treble clef showing a whole rest on the first line, followed by a whole note A on the second line, and a whole note A on the second line.

Root = 10 (A#)

10:0

10:7

A musical staff in treble clef showing a whole rest on the first line, followed by a whole note A# on the second line, and a whole note A# on the second line.

Root = 10 (Bb)

10:0

10:7

A musical staff in treble clef showing a whole rest on the first line, followed by a whole note Bb on the second line, and a whole note Bb on the second line.

Root = 11 (B)

11:0

11:7

A musical staff in treble clef showing a whole rest on the first line, followed by a whole note B on the second line, and a whole note B on the second line.

An empty musical staff in treble clef.