

Chord Type 0 5 in All Keys

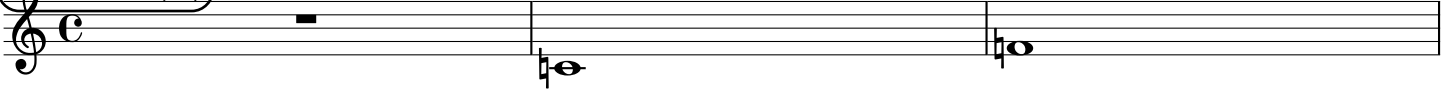
Treble Clef, 2 Notes, Diamorphic Scale Degrees:14

Stanley Jordan

Root = 0 (C)

0:0

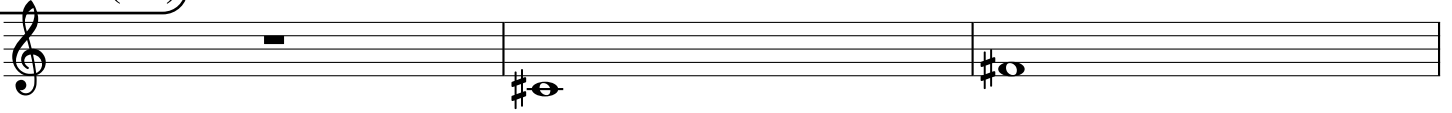
0:5



Root = 1 (C#)

1:0

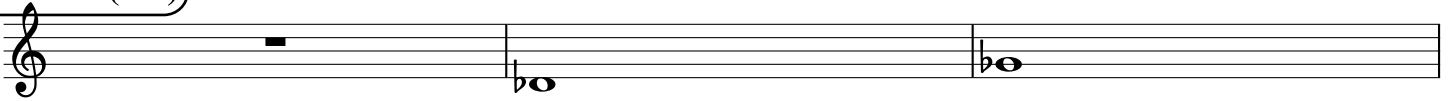
1:5



Root = 1 (Db)

1:0

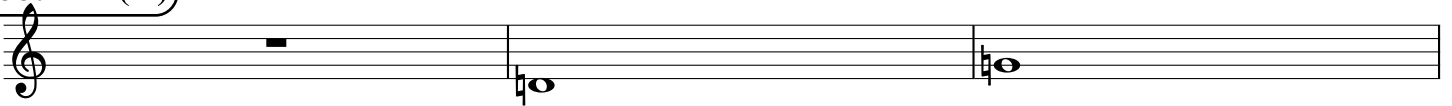
1:5



Root = 2 (D)

2:0

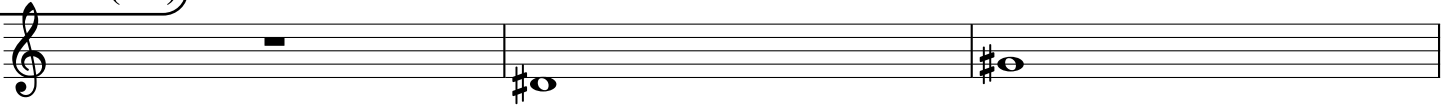
2:5



Root = 3 (D#)

3:0

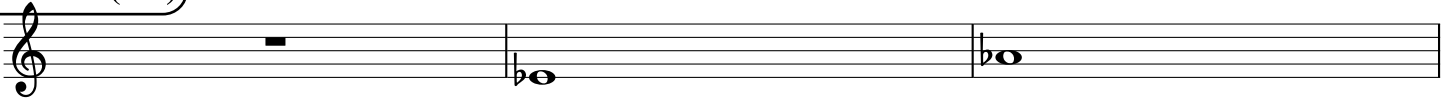
3:5



Root = 3 (Eb)

3:0

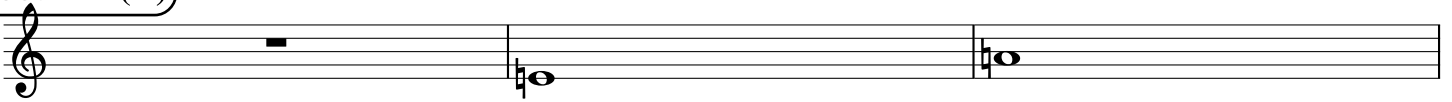
3:5



Root = 4 (E)

4:0

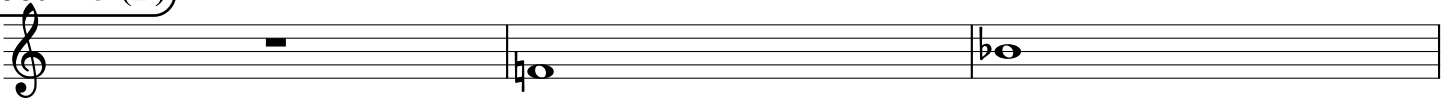
4:5



Root = 5 (F)

5:0

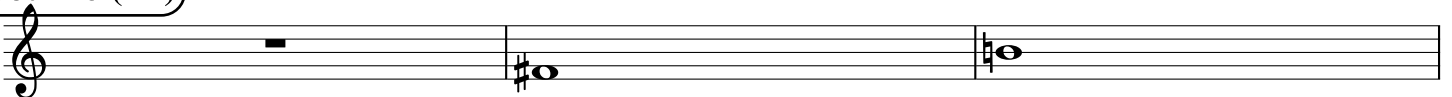
5:5



Root = 6 (F#)

6:0

6:5



Root = 6 (Gb)

6:0

6:5

A musical staff in treble clef showing a whole rest in the first measure, a whole note Gb in the second measure, and a whole note Gb in the third measure.

Root = 7 (G)

7:0

7:5

A musical staff in treble clef showing a whole rest in the first measure, a whole note G in the second measure, and a whole note G in the third measure.

Root = 8 (G#)

8:0

8:5

A musical staff in treble clef showing a whole rest in the first measure, a whole note G# in the second measure, and a whole note G# in the third measure.

Root = 8 (Ab)

8:0

8:5

A musical staff in treble clef showing a whole rest in the first measure, a whole note Ab in the second measure, and a whole note Ab in the third measure.

Root = 9 (A)

9:0

9:5

A musical staff in treble clef showing a whole rest in the first measure, a whole note A in the second measure, and a whole note A in the third measure.

Root = 10 (A#)

10:0

10:5

A musical staff in treble clef showing a whole rest in the first measure, a whole note A# in the second measure, and a whole note A# in the third measure.

Root = 10 (Bb)

10:0

10:5

A musical staff in treble clef showing a whole rest in the first measure, a whole note Bb in the second measure, and a whole note Bb in the third measure.

Root = 11 (B)

11:0

11:5

A musical staff in treble clef showing a whole rest in the first measure, a whole note B in the second measure, and a whole note B in the third measure.

52

An empty musical staff in treble clef.