

# Chord Type 0 3 in All Keys

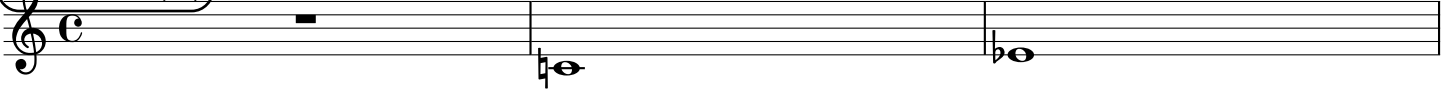
Treble Clef, 2 Notes, Diamorphic Scale Degrees:13

Stanley Jordan

Root = 0 (C)

0:0

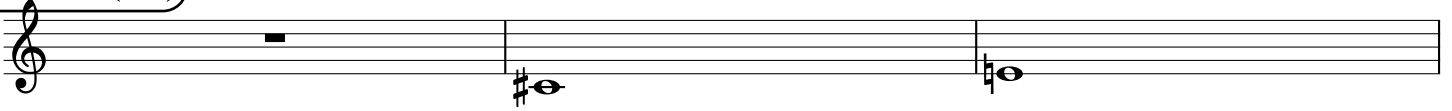
0:3



Root = 1 (C#)

1:0

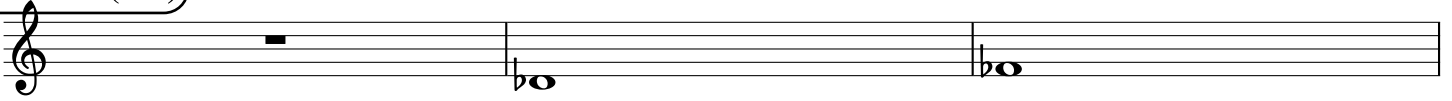
1:3



Root = 1 (Db)

1:0

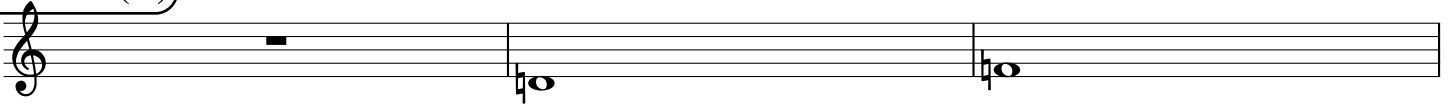
1:3



Root = 2 (D)

2:0

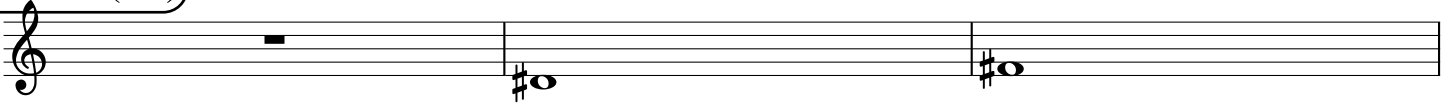
2:3



Root = 3 (D#)

3:0

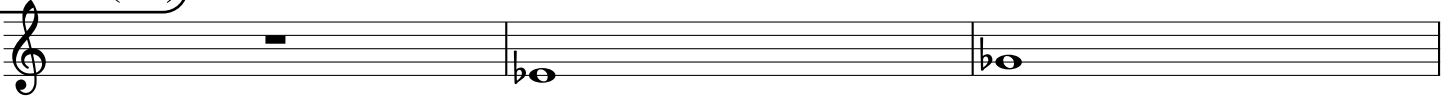
3:3



Root = 3 (Eb)

3:0

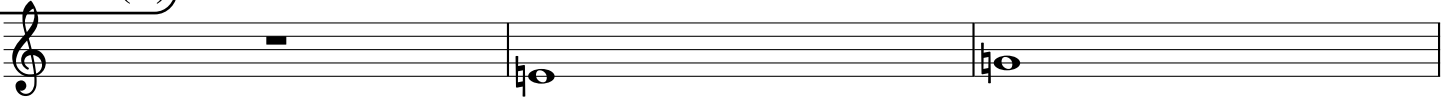
3:3



Root = 4 (E)

4:0

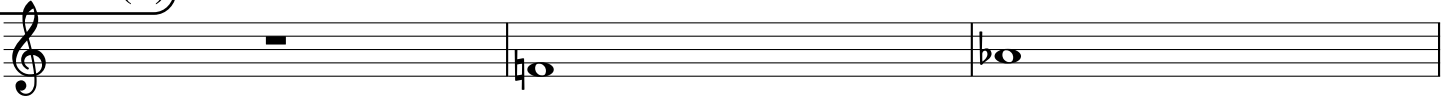
4:3



Root = 5 (F)

5:0

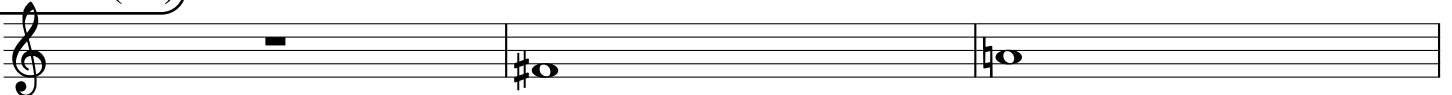
5:3



Root = 6 (F#)

6:0

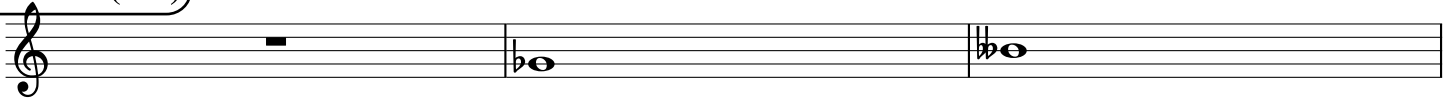
6:3



Root = 6 (Gb)

6:0

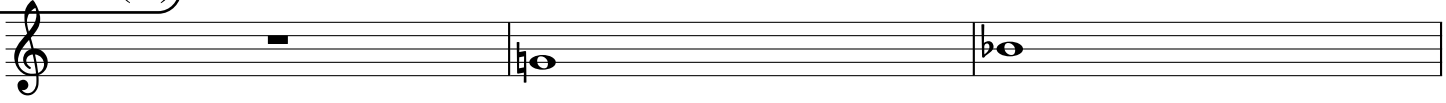
6:3



Root = 7 (G)

7:0

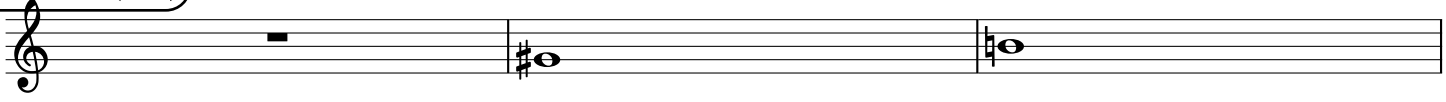
7:3



Root = 8 (G#)

8:0

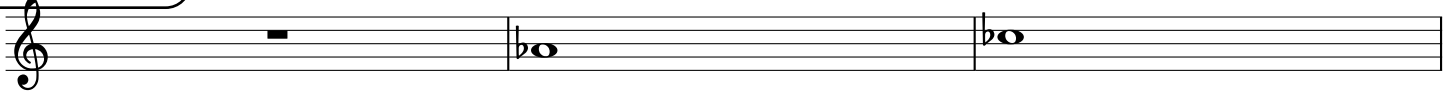
8:3



Root = 8 (Ab)

8:0

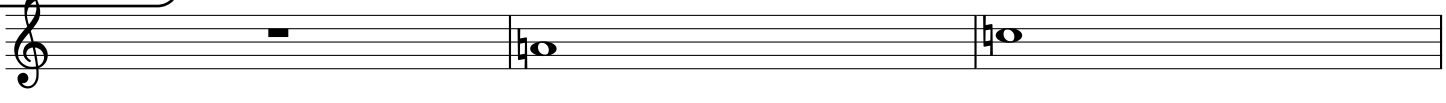
8:3



Root = 9 (A)

9:0

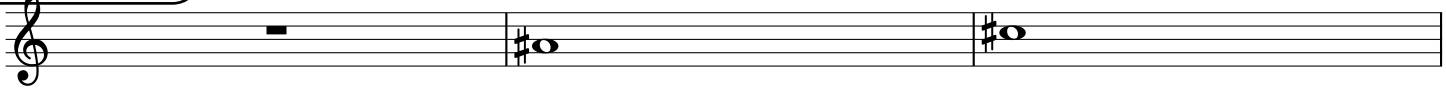
9:3



Root = 10 (A#)

10:0

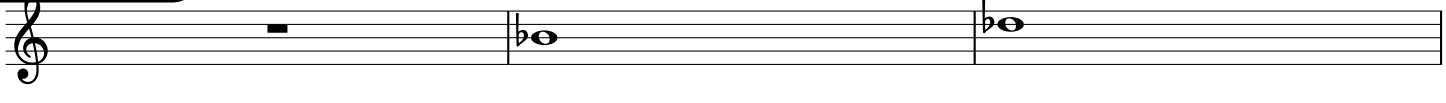
10:3



Root = 10 (Bb)

10:0

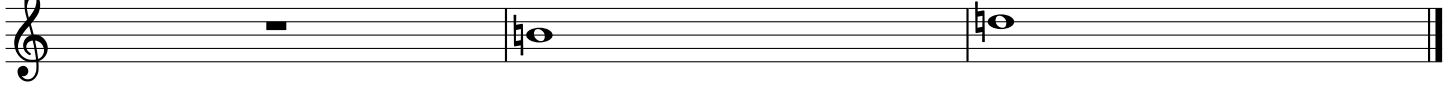
10:3



Root = 11 (B)

11:0

11:3



52

