

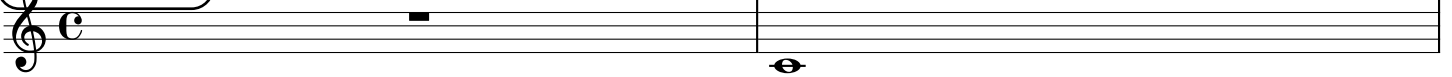
Chord Type 0 in All Keys

Treble Clef, 1 Notes, Diamorphic Scale Degrees:1

Stanley Jordan

Root = 0 (C)

0:0



Root = 1 (C#)

1:0



Root = 1 (Db)

1:0



Root = 2 (D)

2:0



Root = 3 (D#)

3:0



Root = 3 (Eb)

3:0



Root = 4 (E)

4:0



Root = 5 (F)

5:0



Root = 6 (F#)

6:0



Root = 6 (Gb)

6:0



Root = 7 (G)

7:0



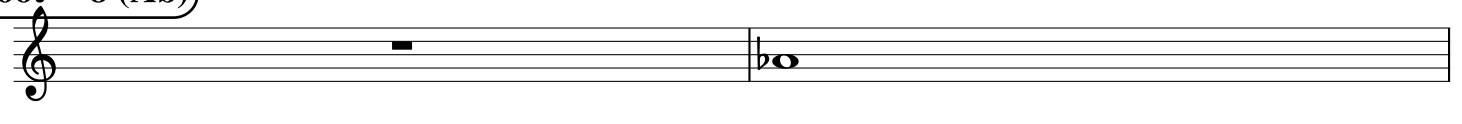
Root = 8 (G#)

8:0



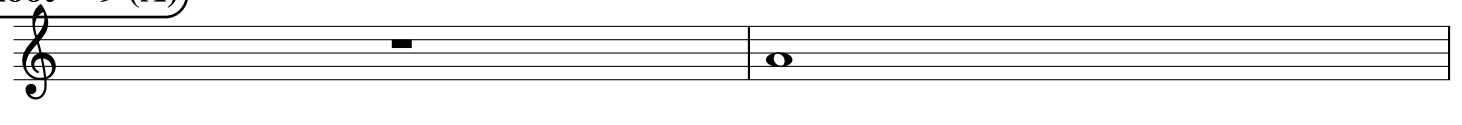
Root = 8 (Ab)

8:0



Root = 9 (A)

9:0



Root = 10 (A#)

10:0



Root = 10 (Bb)

10:0



Root = 11 (B)

11:0



35

